

H9MO-LME Compact SDH Multiplexer

Datasheet

Product Overview

H9MO-LME is a member of Huahuan's Metro-Edge Express SDH/MSPP product family. This family of products is aimed at the access network establishment, providing TDM and Ethernet services to meet the needs of today's network evolution. Other members in the Metro-Edge Express include H9MO-LMX, H9MO-LM, H9MO-LMFIT, H9MO-LMV, H9MO-LM63, etc.

H9MO-LME adopts combined design, the system card, power card and interface card are mix-assembly. To meet different requirement of service interface type and quantity, different configuration of H9MO-LME are available. H9MO-LME provides 1/2 STM-1 ports, 2/4 Fast Ethernet ports, 4/8/16 E1 ports, and V.35 port. It is applicable to different network, such as star network, chain network, and ring network, realizing a very flexible networking.

H9MO-LME supports features as follows:

- Support 1+1 MSP, SNCP protection
- Management channel can be DCC/E1/VC12
- E1 BERT test is embedded
- Internal clock/external clock/line clock/clock holdover
- Ethernet service supporting GFP encapsulation, VC12 virtual concatenation and LCAS, P VLAN, 802.1Q

H9MO-LMFE supports the following services on different ports:

- STM-1(Single core is available)
- FE(Electrical)
- E1/V.35/E3/DS3

Hardware Architecture

H9MO-LME is a 1U-high and 19 inch-wide box. All ports and indicators are output by front panel as shown below:



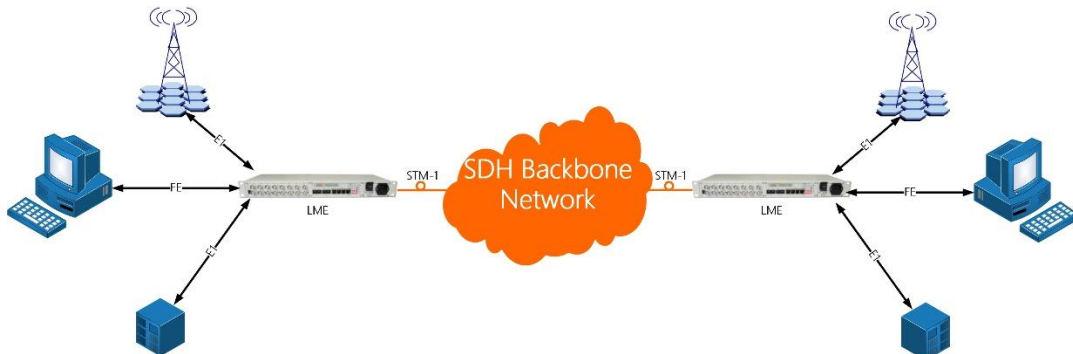
Specifications

STM-1 Fiber Port	
Bit rate:	155520kbit/s 4.6ppm
Line code:	Scrambled NRZ
E1 Port	
Bit rate:	2.048 Mbps ± 50 ppm
Line code:	HDB3
Connector	BNC (4*E1/8*E1 interface), RJ-48 C (4/8/16*E1 interface) or CC4 (16*E1 interface board)

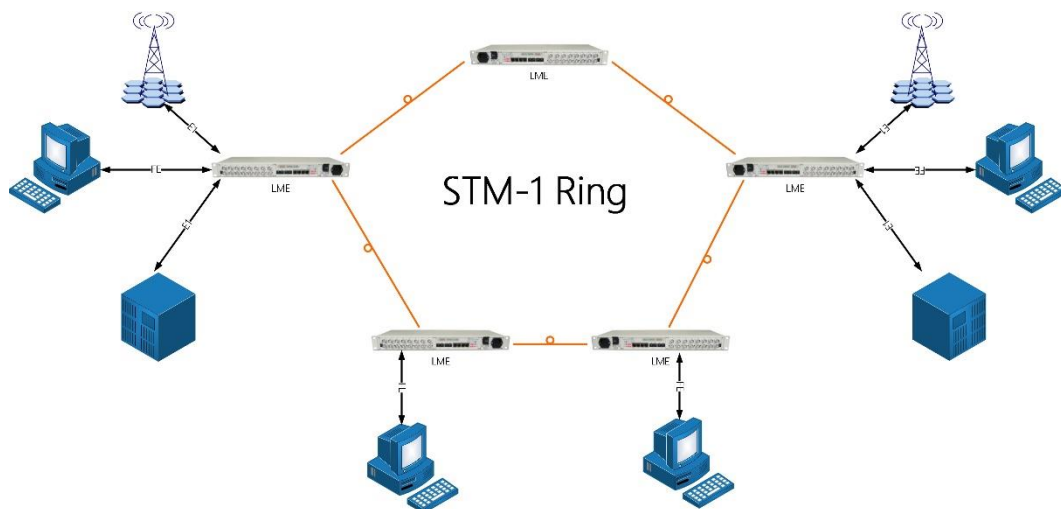
Impedance:	RJ48C: Default: 75 ohms (option: 120 ohms) BNC: 75 ohms	
Number of ports:	0, 4, 8,16	
V.35 Port		
Bit rate:	Framed Nx64kbps, $1 \leq N \leq 31$;	Unframed 2048kbit/s
Work mode	DCE, DTE selectable	
connector	DB15 interface	
Quantity	0 or 2	
Ethernet Port/ Management Port		
Rate:	2M~100M	
Interface mode:	Single channel: auto-negotiation, 100Base-Tx / 10Base-Tx full-duplex/half-duplex	
	Multichannel Ethernet EoS: auto-negotiation, 100Base-Tx / 10Base-Tx full-duplex	
	Multichannel Ethernet EoE: auto-negotiation, 100Base-Tx / 10Base-Tx full-duplex	
Transmission mode	EoS, EoE, Eo64K	
MTU	EoS: 2000 or 2032 bytes adjustable	
	EoE: fixed 2032bytes	
	E064K: fixed 2032bytes	
Connector	RJ45	
Connector Quantity	4	
Timing		
Internal, STM-1 line, E1 tributary line		
Mechanical/Electrical		
Dimension:	H9MO-LME-01T0442CHR/01A0442CHR: 44mm x 258mm x 440mm(H/D/W)	
	Other models size: 44mm x 136mm x 440mm(H/D/W)	
Net weight:	≤ 2.5 kg	
Power (AC):	100 ~ 240 V, 50/60Hz	
Power (DC):	-48 V(-72V ~ -36V), +24V(18V~36V)or +12V(9V ~ 18V)	
Consumption:	≤ 12 W	
Working temp	0 ~ 45 °C	
Humidity:	0-90%RH (non-condensing)	
Standard Compliance	TU-T G.703, G.704, G.707, G.736, G.781, G.783, G.784, G.798, G.803, G.811, G.813, G.823, G.825, G.826, G.841, G.957, G.7041, G.7042, IEEE802.3, 802.1Q, 802.1P, O.150	

Typical Application

● Point to Point Application:



● Ring Network Application:



Standard Compliance

Items	Standards and Protocols
SDH Interface	ITU-T G.957, G.707
E1 port	ITU-T G.703, G.704
Clock port	ITU-T G.823
Ethernet port	IEEE 802 G.7041/G.704 2/G.7043 and G.8040